



Access Guide to Wonder'neath

This guide is to provide information about Wonder'neath's space so you know what to expect upon your first visit. We strive to provide an accessible space for all who come to Wonder'neath and welcome your feedback and suggestions.

About Wonder'Neath

Wonder'neath Art Society is an artist-led organization that brings professional artists and local residents together in dynamic art exploration. Wonder'neath encourages and promotes art as a tool for expression, connection and social transformation through neighbourhood-based arts programming where the public can gather and make art.

Wonder'neath believes in the transformative powers of art for individuals and communities. We create spaces for and prioritize art making that allows artists to be visible and develop meaningful relationships. We aim to listen and recognize many voices. We embrace collaborations that foster self knowledge, a sense of belonging, and problem solving through the arts.

How to Get to Wonder'neath

Wonder'neath is located at:
2482 Maynard Street
Kjipuktuk (Halifax), Nova Scotia
B3K 3V4

Our door is located on the right hand side of the building (available in the photo)

Directions

By Bus:

The North End can be reached via many Halifax Transit bus routes. Routes 2 and 3 run along North Street and routes 7 and 8 run along Robie Street with stops all near to Wonder'neath Art Society.

By Car:

Maynard Street is a one-way street that runs South East to North West, if you take any street south of Roberts Street you will be able to access the building by car.



Parking

There is a bike rack at the front of the building. Directly in front of the building is a large parking lot which can be used by visitors, with an accessible parking spot on either side of the lot closest to the building entrances.

Know Before You Go

We are a scent-free zone due to allergies. This includes natural scents as well, please avoid all products that contain Patchouli.

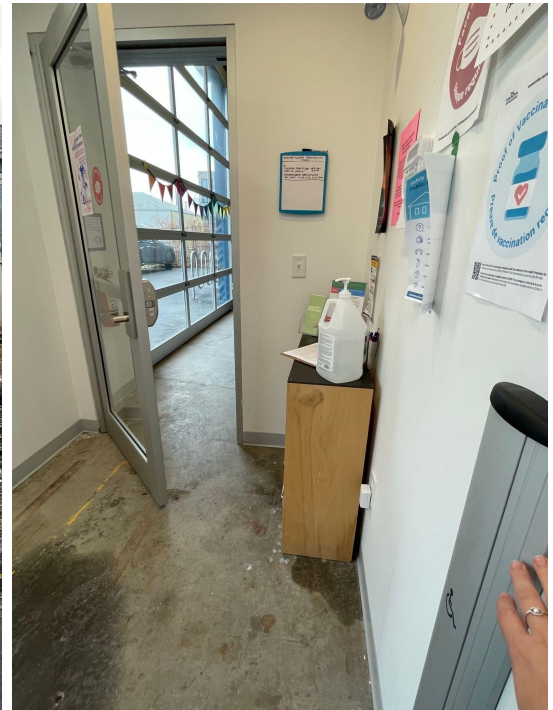
COVID-19 Community Expectations

- We require proof of vaccination and ID or documentation of medical exemption
- Wearing a mask covering your nose, mouth and chin is expected of all individuals within the space.
- We have adult and children masks available for those who forgot.
- We ask all individuals coming the space to sign the contact tracing form in the front vestibule

Wonder'neath's Spaces

Front Entrance

The main door is automated and equipped with an exterior button, which leads to an interior vestibule, followed by a second automated door to the main Wonder'neath studio space. The door will be open for your visit or someone at Wonder'neath will have a code to unlock the door.



Main Programming Space

The main programming space has a variety of setting areas including tables and chairs, couches and a children's area. The overhead lights have a dimmer switch that allows you to adjust the brightness to your preference. The tables are able to be moved to accommodate any needs.



On the left side of the building is **The Blue Building Gallery**. This gallery shares a large glass garage door in the middle of the space making the gallery and Wonder'neath visible from both sides.

In the main programming area on the right side of the hallway is **Eyelevel Book Store**, open to the public Wednesday to Friday 12-5pm.



Lift

There is an accessibility lift to the second floor which can be accessed through the entrance on the right as you face the building. While Wonder'neath is often a busy environment, all studio facilitators and staff will ensure that passages through the space are maintained and kept clear to the accessibility lift at the end of the main floor hallway.



The lift requires that you hold the bottom consistently to call it to your floor. It takes about one minute for the lift to reach you. The door will open and close automatically. Once on the lift, to move in between floors you need to press the button of the number for the entirety of the ride. If you stop pressing the bottom the lift will stop. There is an emergency line within the lift that is active 24/7.



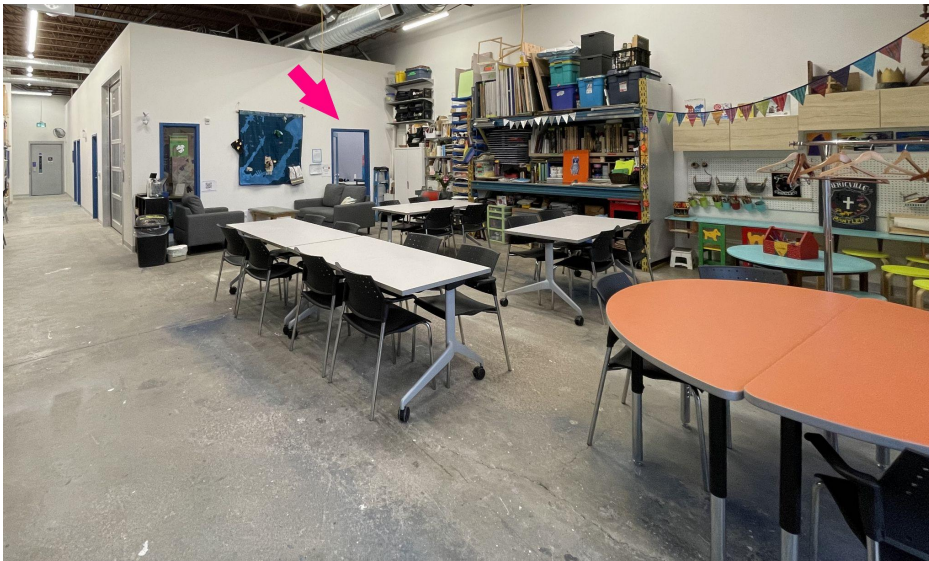
We understand that this may not be suitable for all and suggest that each person have someone join them on the lift to assist on pressing the button.

While you are riding the lift you will see the wall between the two floors as you move up or down.



Quiet Room

We have a quiet room available in the back right corner of the main programming space. This is a designated room for anyone that is wanting less stimulation. With high ceilings in the building and a variety of programs going on, the space can be loud and over stimulating for some guests. In the quiet room there are a pair of noise reduction headphones available for children and adults. An additional pair of headphones are available in the main space.



Washrooms

On each level there are two all-gender washrooms. Each floor has a wheelchair accessible washroom. On the first floor one of the washrooms has a child changing table. The bathrooms have manual door and light switches, grab bars in the accessible washrooms, menstrual products and sharps bin available.

First Floor Bathrooms located down the hallway left to the lift:



Second Floor Bathrooms Located across from the kitchen table. Facing the bathrooms the one on the left is smaller and the one on the right is wheelchair accessible:



Second Floor and Kitchen

The second floor houses a variety of artist studios, offices, a darkroom and a kitchen. The kitchen is located at the end of the hall to the right and is communally used by all in the building.



Wonder'neath Community Expectations

Wonder'neath aims to listen and welcome all people. We respect all expressions of identity and will not tolerate discrimination based on gender, sexuality, race, ability, or any form of harassment or violence. We will ask you to leave if you are causing harm.

Social/Environmental Conditions

- Wonder'neath's programming space is a passage-way for many artists to get to their studios. So there may be folks walking through to get to their studios or the eyelevel bookstore during your event/booking.
- Programming might be happening in the gallery during your scheduled time and will be visible through the glass door. We will provide advance notice if there are events planned throughout the building.
- There is condo construction taking place next to the building and also across the street, so there is a variety of noises throughout the day from the construction sites.